



The Butts, Brentford, Middlesex, TW8

£1,150,000 Freehold

FOUR BEDROOMS, FOUR BATHROOMS, STUNNING RECEPTION WITH CHERRY WOOD FLOORS, KITCHEN / DINER, GARAGE, CINEMA ROOM, CONVERTED PERFUME FACTORY, DECKED ENTERTAINING AREA, THE BUTTS CONSERVATION AREA.

HAMPTONS
INTERNATIONAL

Description

Located in the sought after Butts Conservation area, this once disused perfume factory has been lovingly converted into a beautiful family home by its current owners. The house is arranged over four floors and offers versatile and stylish living space. The stunning reception room is bright and airy and has Cherry hardwood flooring with large concertina style doors leading onto a spacious decked entertainment area. The kitchen has fully integrated modern appliances with beautiful sandstone work surfaces and glass splash backs. These work surfaces cleverly extend into the dining area to form a large breakfast bar. The spacious master bedroom has a bright west facing aspect and a luxury en suite bathroom with under floor heating. The guest bathroom, also with under floor heating, and guest bedroom are also located on this level. The third floor has an additional two family bedrooms and bathroom as well as additional storage cupboards. On the lower ground floor there is a large garage and extremely spacious cinema / gym room. This could easily be transformed into a self contained guest flat as it has a shower room as well as utility area. Viewing on this spectacular property is highly recommended.

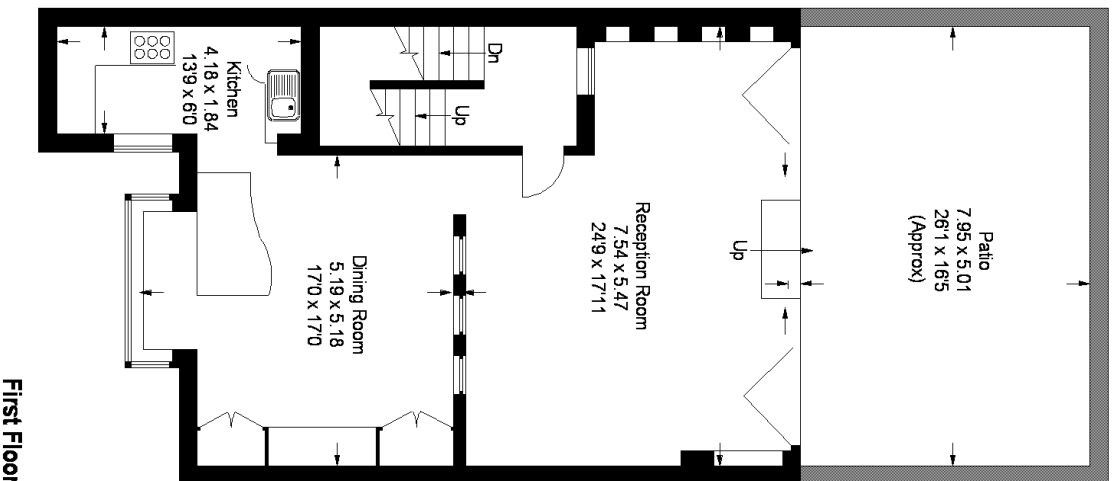
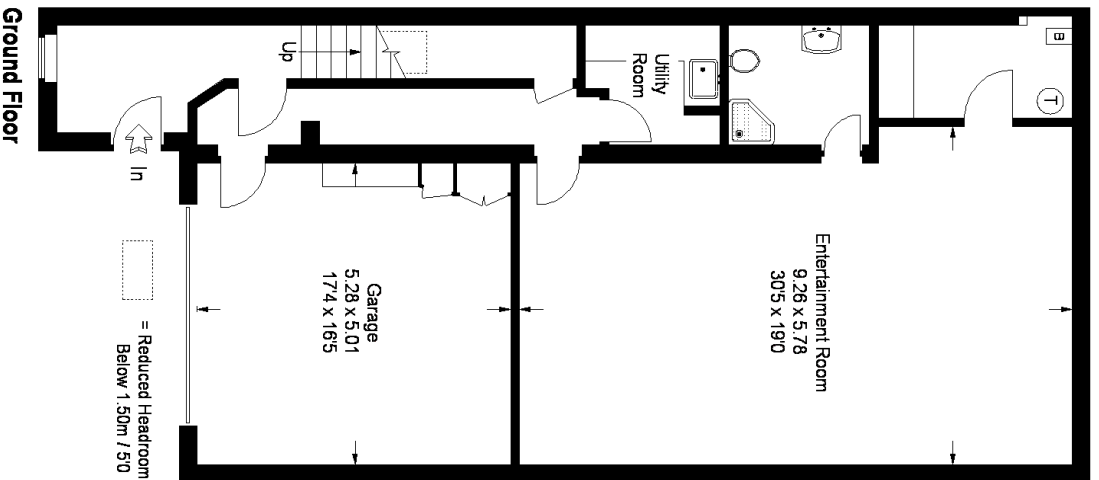
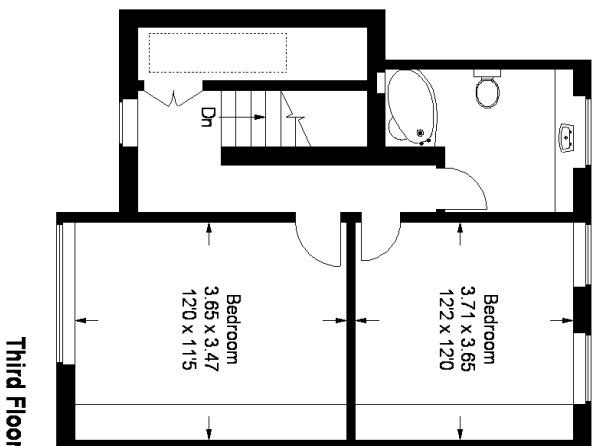
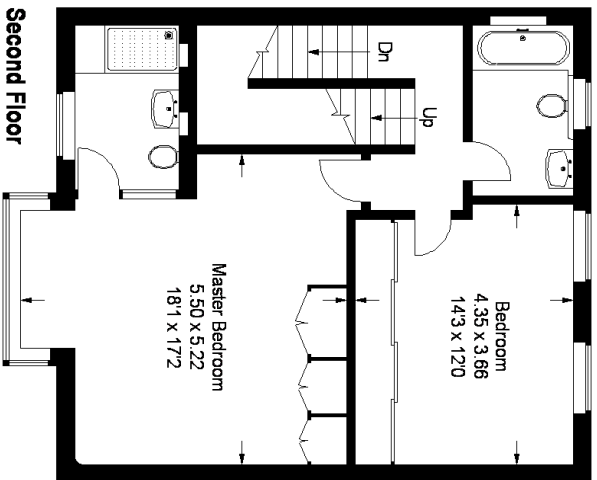
Tenure

Freehold.



The Butts, Brentford, TW8

Approximate Gross Internal Area (Including Garage):-
307 sq m / 3305 sq ft



FLOORPLANZ © 2008
01483 755510 Ref 38272

This plan is for layout guidance only. Not drawn to scale unless stated. Windows & door openings are approximate. Whilst every care is taken in the preparation of this plan, please check all dimensions, shapes & compass bearings before making any decisions reliant upon them.

For clarification, we wish to inform prospective purchasers that we have prepared these sales particulars as a general guide. We have not carried out a detailed survey, nor tested the services, appliances and specific fittings. Room sizes are approximate and rounded: they are taken between internal wall surfaces and therefore include cupboards/shelves, etc. Accordingly, they should not be relied upon for carpets and furnishings. Formal notice is also given that all fixtures and fittings, carpeting, curtains/blinds and kitchen equipment, whether fitted or not, are deemed removable by the vendor unless specifically itemised within these particulars.



Viewing strictly by appointment only.

Hamptons Chiswick
251 Chiswick High Road
London, W4 4PU

Sales. 020 8987 8444
chiswick@hamptons-int.com

www.hamptons.co.uk

0911241633

HAMPTONS
INTERNATIONAL