



St. Johns Mews, New Road, Marlborough, Wiltshire, SN8

Guide Price £260,000 Freehold

Entrance Hall, Living/Dining/Kitchen Area, 3 Bedrooms, Bathroom, Shower Room, Parking Space.



Description

A stylish mews house arranged over three floors with the open plan living room on the 1st floor to benefit from the views over the town and towards Savernake Forest. The property has been completed to a high standard throughout with of particular note under floor heating and camera security system. The kitchen is fully fitted with a stylish contemporary range of appliances and wall and floor units. There is one double bedroom and a bathroom on the ground floor and 2 further double bedrooms and a bathroom on the second floor. The property benefits from an allocated parking space.

Natural Beauty and includes nearby Savernake Forest.

Outside

There is designated parking.

Local Authority

Wiltshire Council Browfort, Bath Road, Devizes, Wiltshire O1380 724911

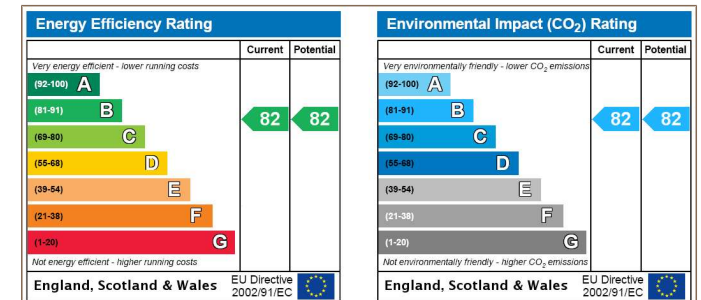
Tenure

Freehold.

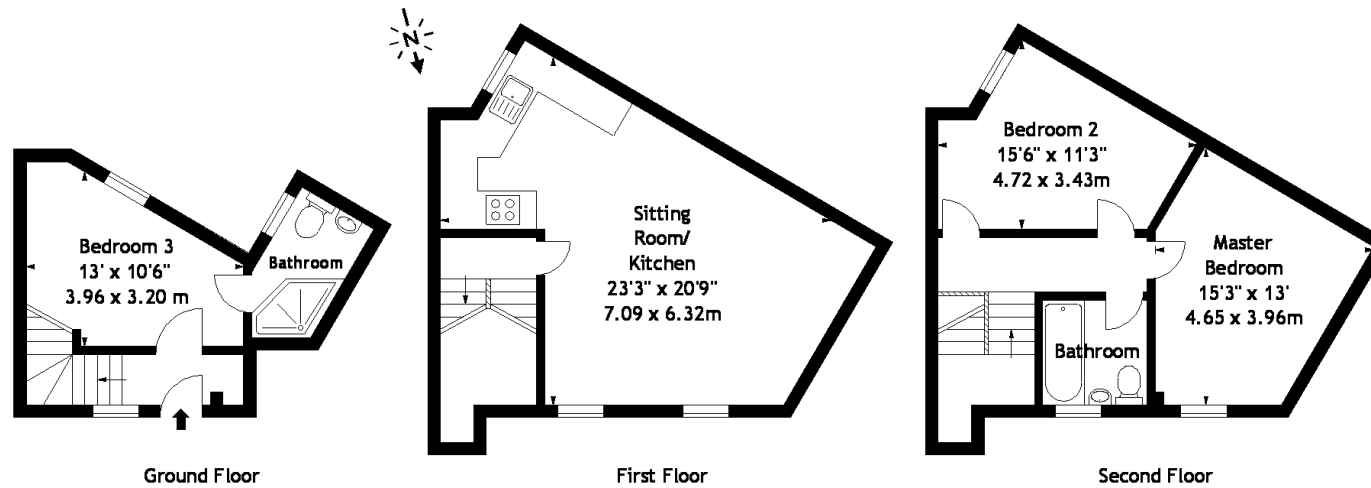


Situation

New Road is located a few steps away from the historic High Street of the old market town of Marlborough, which provides an extensive range of shopping facilities, a twice-weekly market, a public library and various restaurants and pubs. The town is well served by a good range of schools and benefits from a sports centre with an indoor swimming pool. Access to the M4 motorway is at junction 15 and the commercial centre of Swindon is about 12 miles, from which there is a regular rail service to London. The countryside surrounding the town is designated as an Area of Outstanding



St. Johns Mews,
Marlborough,
Approx. Gross Internal Area
958 Sq Ft - 89.00 Sq M



Measured in accordance with RICS guidelines. Every attempt is made to ensure accuracy, however all measurements are approximate.

This floor plan is for illustrative purposes only and is not to scale.

Supplied Exclusively for Dreweatt Neate by

© Digihouse.net

Photographs * Floorplans * EPCs * HIPS

www.digihouse.net

For clarification, we wish to inform prospective purchasers that we have prepared these sales particulars as a general guide. We have not carried out a detailed survey, nor tested the services, appliances and specific fittings. Room sizes are approximate and rounded; they are taken between internal wall surfaces and therefore include cupboards/shelves, etc. Accordingly, they should not be relied upon for carpets and furnishings. Formal notice is also given that all fixtures and fittings, carpeting, curtains/blinds and kitchen equipment, whether fitted or not, are deemed removable by the vendor unless specifically itemised within these particulars.



Viewing strictly by appointment only.

0910261228

Hamptons Marlborough

20 High Street
Marlborough, Wiltshire, SN8 1AA

Sales. 01672 516256
marlborough@hamptons-int.com

www.hamptons.co.uk

HAMPTONS
INTERNATIONAL