



Woodlands, Drake Lane,  
Dursley, Gloucestershire, GL11  
Guide Price £225,000 Leasehold

Living Room, Kitchen/Breakfast Room, Bedroom with Ensuite, Shower Room, Privately owned Courtyard, Communal Restaurant with, Cocktail Bar, Drawing Room, Library, Passenger Lift, Client Liaison Manager, Secure Parking, Gardens.



**Description**

This one bedroom ground floor apartment is found to the rear of the house benefiting from its own small courtyard area. A secondary separate access via a set of French doors leads into the living room. This is the only property with this facility. An attractive feature of this property is the spacious kitchen/breakfast room with its high ceilings, fitted with the "Burford" range of units incorporating a Bosch oven & hob and integrated fridge/freezer. The bedroom has an ensuite bathroom. There is also a further shower room which leads off the entrance hall.

**Situation**

Formerly known as "The Towers", Woodlands was once the elegant home of the Lister family, and was built in 1895. It has now been sympathetically restored and converted into 7 luxury retirement apartments by craftsmen. Dursley has a wide range of local shops and services such as banks, Post Office, solicitors, dentists and a regular farmers' market. Amenities include a bowling green, an award-winning modern library and an excellent swimming pool. It is also home to Stinchcombe Hill Golf Club.

**Local Authority**

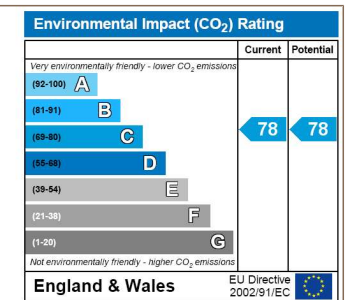
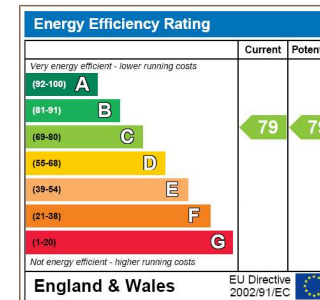
Stroud District Council Council Offices, Ebley Mill, Westward Road, Stroud O1453 766321

**Tenure**

Leasehold.

**Additional Information**

Littlecombe Park is a well-designed private development consisting of The Hollies, a prestigious nursing home, Woodlands, a handsome Edwardian residence converted into 7 individual quality retirement apartments and a further purpose-built property (currently under construction) comprising more quality retirement apartments with leisure facilities. Woodlands offers exclusive retirement living within a friendly and supportive community. It caters for luxury independent lifestyles whilst tailored care/service packages covering personal care and domestic services are also available to suit individual requirements. A range of facilities and services are available such as emergency call system, reception area with a post-box, CCTV security, wheelchair access, secure grounds, room service, car valeting and maintenance help. These apartments can only be purchased by clients over 55 years of age. STR080254.



FLOORPLANZ ©2008  
01483 755510 Ref 45055

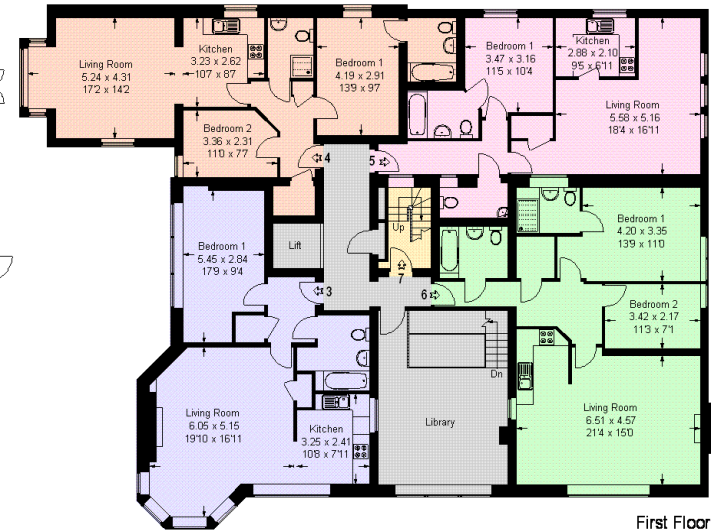
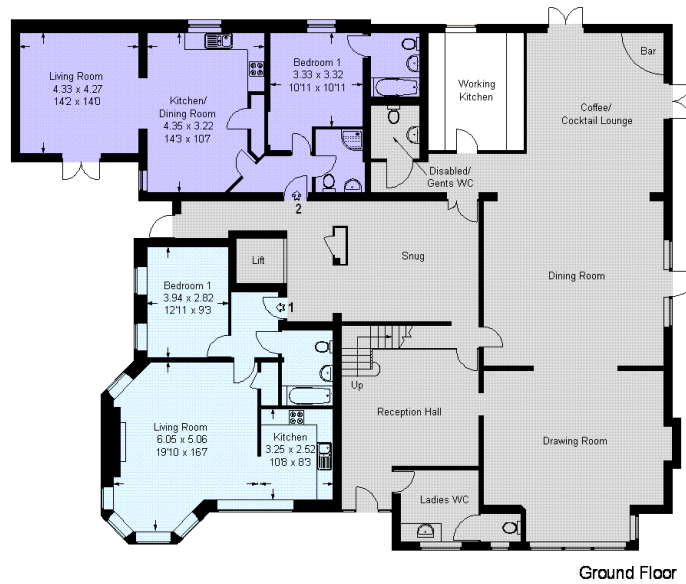
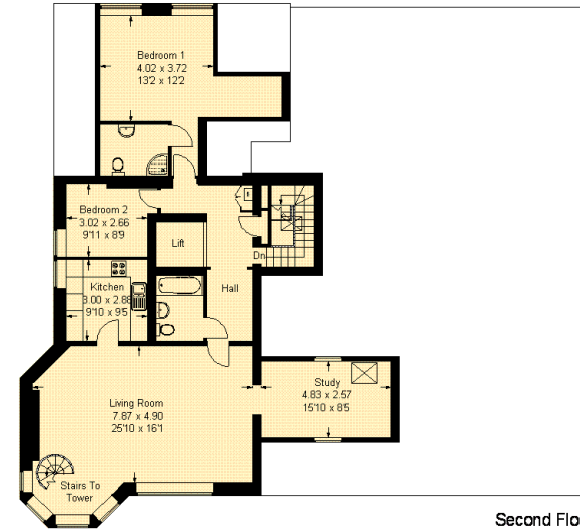
This illustration is for identification purposes only.  
Draw in accordance with RICS guidelines. Not drawn to scale unless stated. It has been created using previous drawings as reference material, therefore the accuracy of information cannot be guaranteed. Whilst every care is taken in the preparation of this plan, please check all dimensions, shapes & compass bearings before making any decisions reliant upon them.

## Woodlands, Littlecombe Park, Dursley

Approximate Gross Internal Area :-  
 Apartment 1 :- 57 sq m / 613 sq ft  
 Apartment 2 :- 70 sq m / 753 sq ft  
 Apartment 3 :- 61 sq m / 656 sq ft  
 Apartment 4 :- 70 sq m / 753 sq ft  
 Apartment 5 :- 58 sq m / 624 sq ft  
 Apartment 6 :- 78 sq m / 839 sq ft  
 Apartment 7 :- 129 sq m / 1388 sq ft (Excluding Tower Balcony)  
 Total :- 807 sq m / 8683 sq ft  
 (Including Communal Parts)

### Key

	- Communal Areas		- Apartment 4
	- Apartment 1		- Apartment 5
	- Apartment 2		- Apartment 6
	- Apartment 3		- Apartment 7



For clarification, we wish to inform prospective purchasers that we have prepared these sales particulars as a general guide. We have not carried out a detailed survey, nor tested the services, appliances and specific fittings. Room sizes are approximate and rounded: they are taken between internal wall surfaces and therefore include cupboards/shelves, etc. Accordingly, they should not be relied upon for carpets and furnishings. Formal notice is also given that all fixtures and fittings, carpeting, curtains/blinds and kitchen equipment, whether fitted or not, are deemed removable by the vendor unless specifically itemised within these particulars.



Separate Entrance



Communal Dining Room



Cocktail Bar



Communal Living Room

Viewing strictly by appointment only.

**Hamptons Stroud**  
52-53 London Road  
Stroud, Gloucestershire, GL5 2AD

Sales. 01453 751666  
stroud@hamptons-int.com

[www.hamptons.co.uk](http://www.hamptons.co.uk)

1002241036

